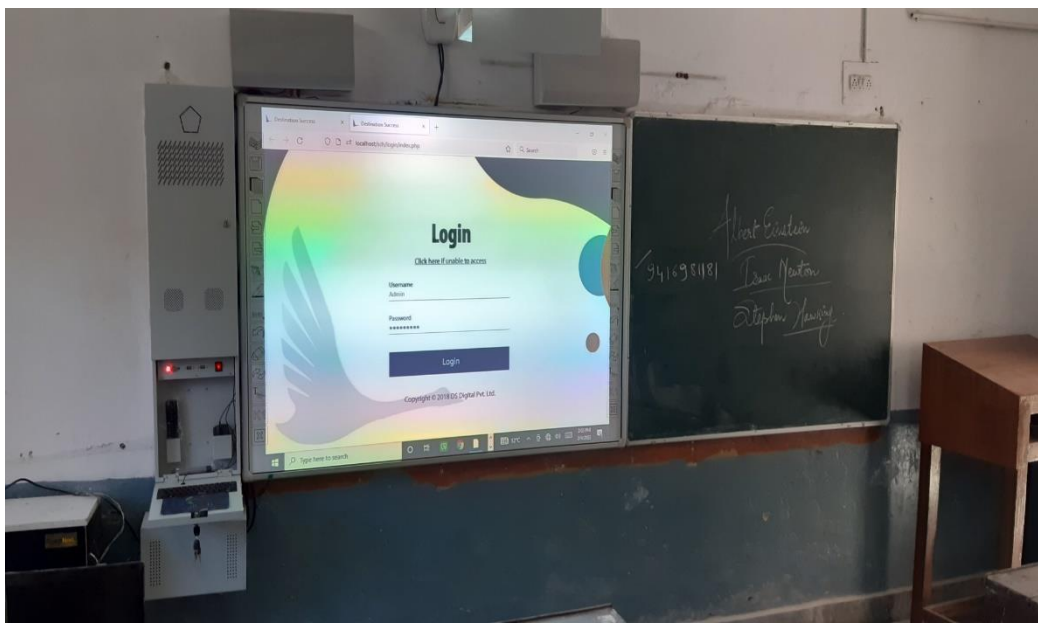


Appendix 'E'

(Refer SS Rewa letter No. SSR/Monthly Report/
2020 dt Feb 2022)

WORKS IN SCHOOL

PROCUREMENT OF ITEMS THROUGH GEM PORTAL FOR ACADEMIC TRAINING AND ADMINISTRATIVE PURPOSE OF CADETS OUT OF MoD GRANT 2020-2021 Rs. 1 CRORE



SMART CLASS EQUIPMENT & DIGITAL CONTENTS SOFTWARE : 16 CLASSES



2000 WATT 252 LITRES HOT AIR OVEN : CHEMISTRY LABORATORY

WORKS IN SCHOOL

PROCUREMENT OF ITEMS THROUGH GEM PORTAL FOR ACADEMIC TRAINING AND ADMINISTRATIVE PURPOSE OF CADETS OUT OF MoD GRANT 2020-2021 Rs. 1 CRORE



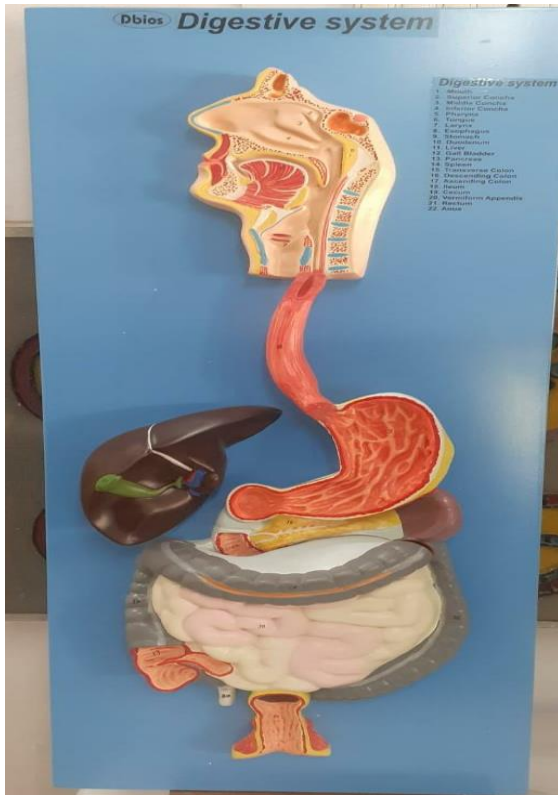
MICROSCOPE WITH SCREEN : BIOLOGY LABORATORY



TRINOCULAR MICROSCOPE WITH DIGITAL CAMERA BIOLOGY LABORATORY

WORKS IN SCHOOL

PROCUREMENT OF ITEMS THROUGH GEM PORTAL FOR ACADEMIC TRAINING AND ADMINISTRATIVE PURPOSE OF CADETS OUT OF MoD GRANT 2020-2021 Rs. 1 CRORE



DIGESTIVE SYSTEM



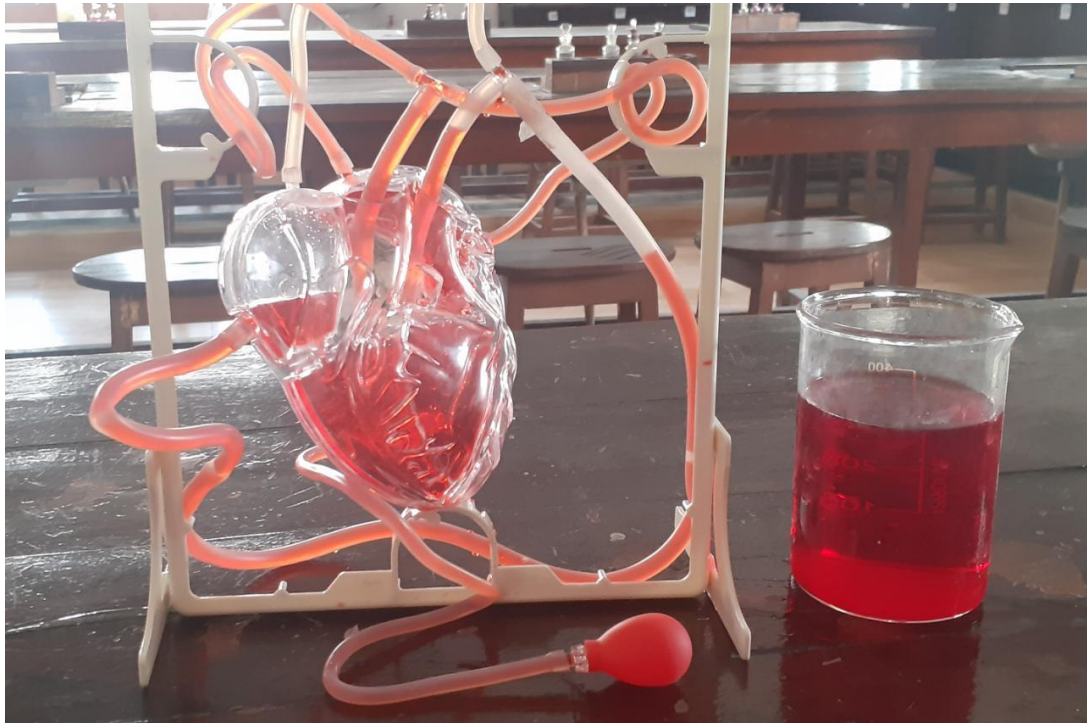
LUNG WITH HEART



**KIDNEY PROFILE, NEPHRON, GLOMERULAR MODEL FOR MEDICAL
TRAINING : BIOLOGY LABORATORY**

WORKS IN SCHOOL

**PROCUREMENT OF ITEMS THROUGH GEM PORTAL FOR ACADEMIC
TRAINING AND ADMINISTRATIVE PURPOSE OF CADETS OUT OF MoD GRANT
2020-2021 Rs. 1 CRORE**



PUMPING HEART FOR MEDICAL TRAINING : BIOLOGY LABORATORY

WORKS IN SCHOOL

PROCUREMENT OF ITEMS THROUGH GEM PORTAL FOR ACADEMIC TRAINING AND ADMINISTRATIVE PURPOSE OF CADETS OUT OF MoD GRANT 2020-2021 Rs. 1 CRORE



MASALA TROLLEY : CADETS' MESS



**SE PLATFORM TROLLEY WITH 400-500 OF LOAD CARRYING CAPACITY SE
: CADETS' MESS**

WORKS IN SCHOOL

REPAIR AND MAINTENANCE WORK OUT OF MP GOVT MAINTENANCE GRANT : 2020-2021

RESURFACING OF CLASSROOM FLOORS – 350 SQM – CLASS VI TO VIII



BEFORE



AFTER

WORKS IN SCHOOL

REPAIR AND MAINTENANCE WORK OUT OF MP GOVT MAINTENANCE GRANT : 2020-2021

REPAIRING OF FLY PROOF WIRE MESH



BEFORE



AFTER

WORKS IN SCHOOL

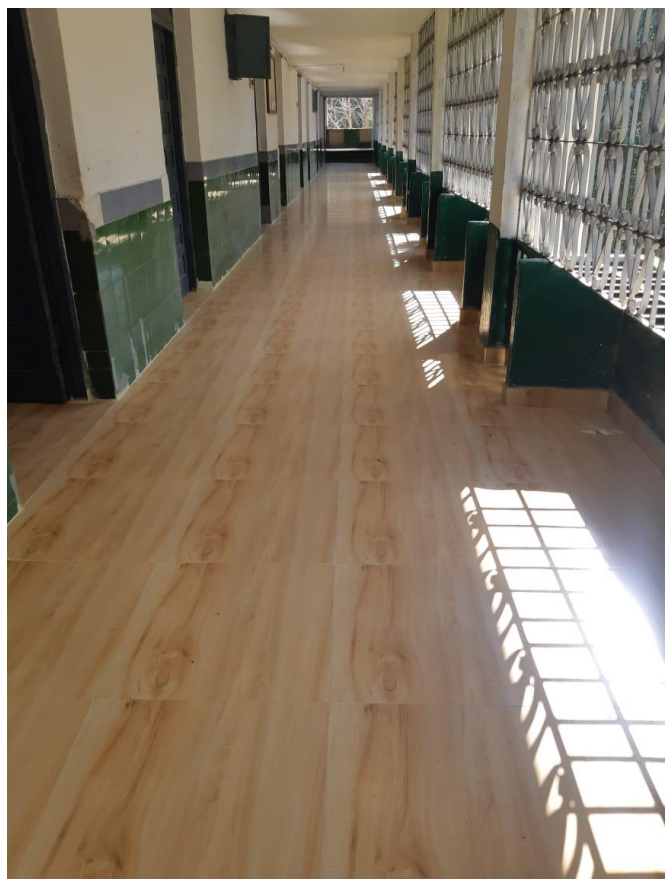
REPAIR AND MAINTENANCE WORK OUT OF MP GOVT MAINTENANCE GRANT : 2020-2021

REPAIRING OF CORRIDOR

BEFORE



AFTER



WORKS IN SCHOOL

REPAIR AND MAINTENANCE WORK OUT OF MP GOVT MAINTENANCE GRANT : 2020-2021

OBSTACLES FOR SSB (GTO)



BEFORE



AFTER

WORKS IN SCHOOL

REPAIR AND MAINTENANCE WORK OUT OF MP GOVT MAINTENANCE GRANT : 2020-2021

OBSTACLES FOR SSB (GTO)



WORKS IN SCHOOL

REPAIR AND MAINTENANCE WORK OUT OF MP GOVT MAINTENANCE GRANT : 2020-2021

OBSTACLES FOR SSB (GTO)



WORKS IN SCHOOL

REPAIR AND MAINTENANCE WORK OUT OF MP GOVT MAINTENANCE GRANT : 2020-2021

OBSTACLES FOR SSB (GTO)



WORKS IN SCHOOL

REPAIR AND MAINTENANCE WORK OUT OF MP GOVT MAINTENANCE GRANT : 2020-2021

GYMNASIUM REPAIR AND MAINTENANCE



BEFORE



AFTER

WORKS IN SCHOOL

REPAIR AND MAINTENANCE WORK OUT OF MP GOVT MAINTENANCE GRANT : 2020-2021

GYMNASIUM REPAIR AND MAINTENANCE



BEFORE



AFTER

WORKS IN SCHOOL

REPAIR AND MAINTENANCE WORK OUT OF MP GOVT MAINTENANCE GRANT : 2020-2021

GYMNASIUM REPAIR AND MAINTENANCE



BEFORE



AFTER

WORKS IN SCHOOL

REPAIR AND MAINTENANCE WORK OUT OF MP GOVT MAINTENANCE GRANT : 2020-2021

GYMNASIUM REPAIR AND MAINTENANCE



BEFORE



AFTER

WORKS IN SCHOOL

REPAIR AND MAINTENANCE WORK OUT OF MP GOVT MAINTENANCE GRANT : 2020-2021

GYMNASIUM REPAIR AND MAINTENANCE



BEFORE



AFTER

WORKS IN SCHOOL

REPAIR AND MAINTENANCE WORK OUT OF MP GOVT MAINTENANCE GRANT : 2020-2021

GYMNASIUM REPAIR AND MAINTENANCE



WORKS IN SCHOOL

REPAIR AND MAINTENANCE WORK OUT OF MP GOVT MAINTENANCE GRANT : 2020-2021

GYMNASIUM REPAIR AND MAINTENANCE



WORKS IN SCHOOL

REPAIR AND MAINTENANCE WORK OUT OF MP GOVT MAINTENANCE GRANT : 2020-2021

SOLAR PANEL NARMADA AND VINDHYA HOUSE



WORKS IN SCHOOL

REPAIR AND MAINTENANCE WORK OUT OF MP GOVT MAINTENANCE GRANT : 2018-2019

CONSTRUCTION OF BOUNDARY WALL FROM GATE NO. 1 TO GATE NO.2

BEFORE



WORKS IN SCHOOL

REPAIR AND MAINTENANCE WORK OUT OF MP GOVT MAINTENANCE GRANT : 2018-2019

CONSTRUCTION OF BOUNDARY WALL FROM GATE NO. 1 TO GATE NO.2

AFTER

